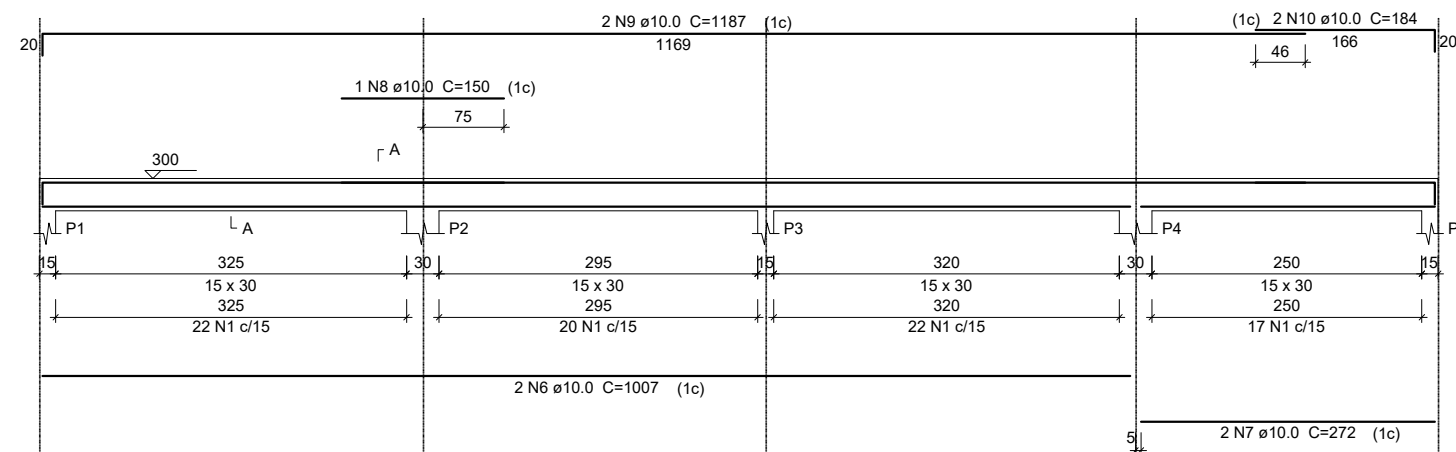
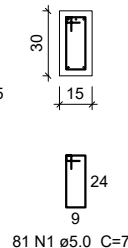


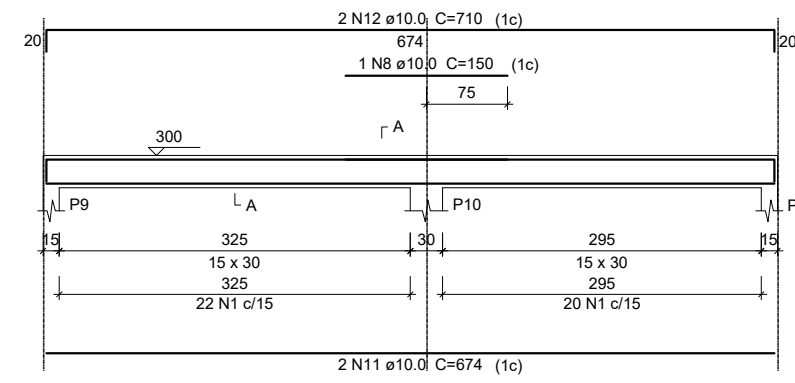
V1



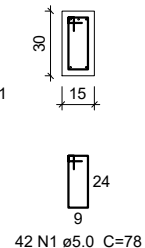
SEÇÃO A-A



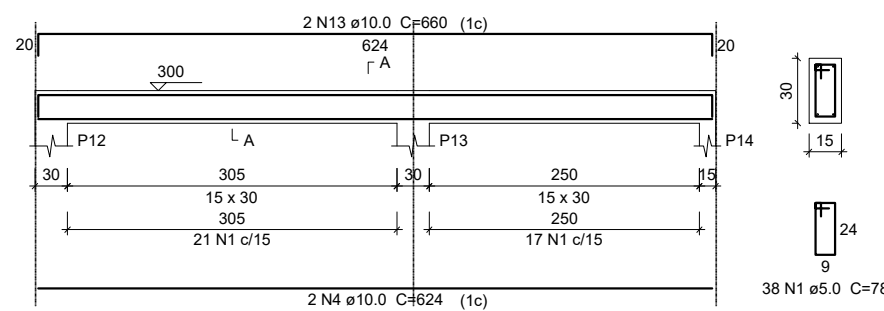
V2



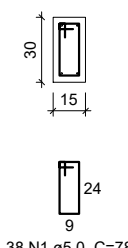
SEÇÃO A-A



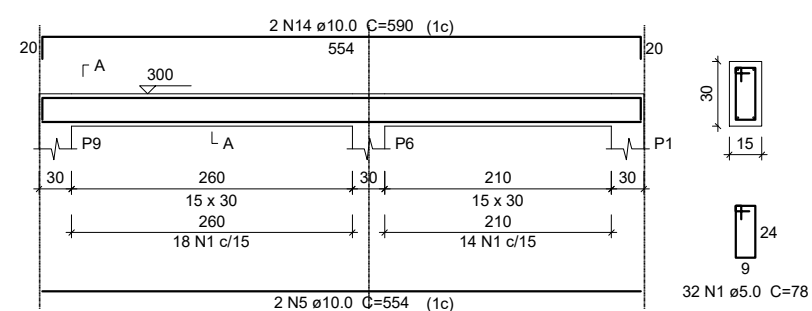
V3



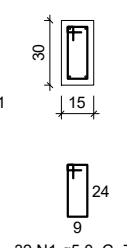
SEÇÃO A-A



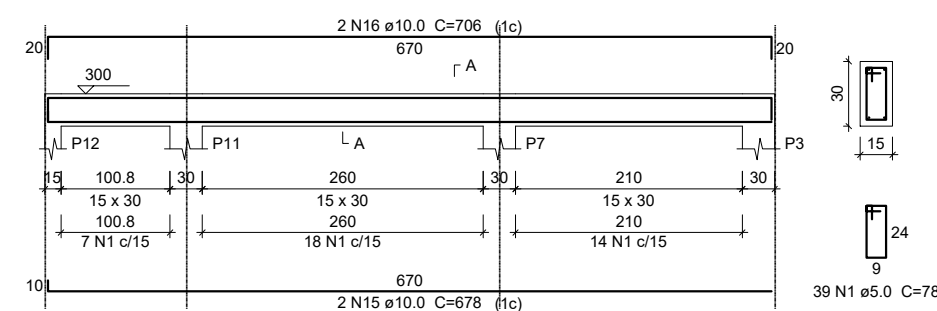
V4



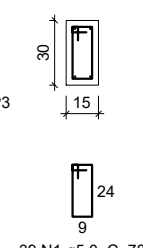
SEÇÃO A-A



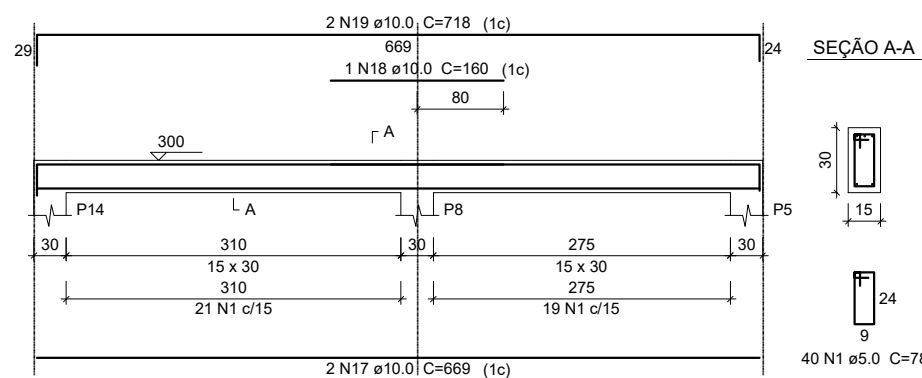
V5



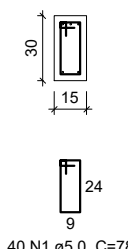
SEÇÃO A-A



V6



SEÇÃO A-A



Proprietário: <b>PREFEITURA MUNICIPAL DE GAURAMA</b>	Responsável Técnico:
Secretaria: <b>SECRETARIA MUNICIPAL DE OBRAS PÚBLICAS</b>	
Obra: <b>AMPLIAÇÃO CRECHE MUNICIPAL CRIANÇA FELIZ</b>	
Conteúdo: <b>VIGAS</b>	
Localização do projeto: <b>RUA PEDRO BEVILAQUA - GAURAMA / RS</b>	

Tipo: <b>ESTRUTURAL</b>
Escala: -
Área: <b>79,74 m²</b>
Data: <b>MAIO / 2021</b>
Prancha:

**08/10**